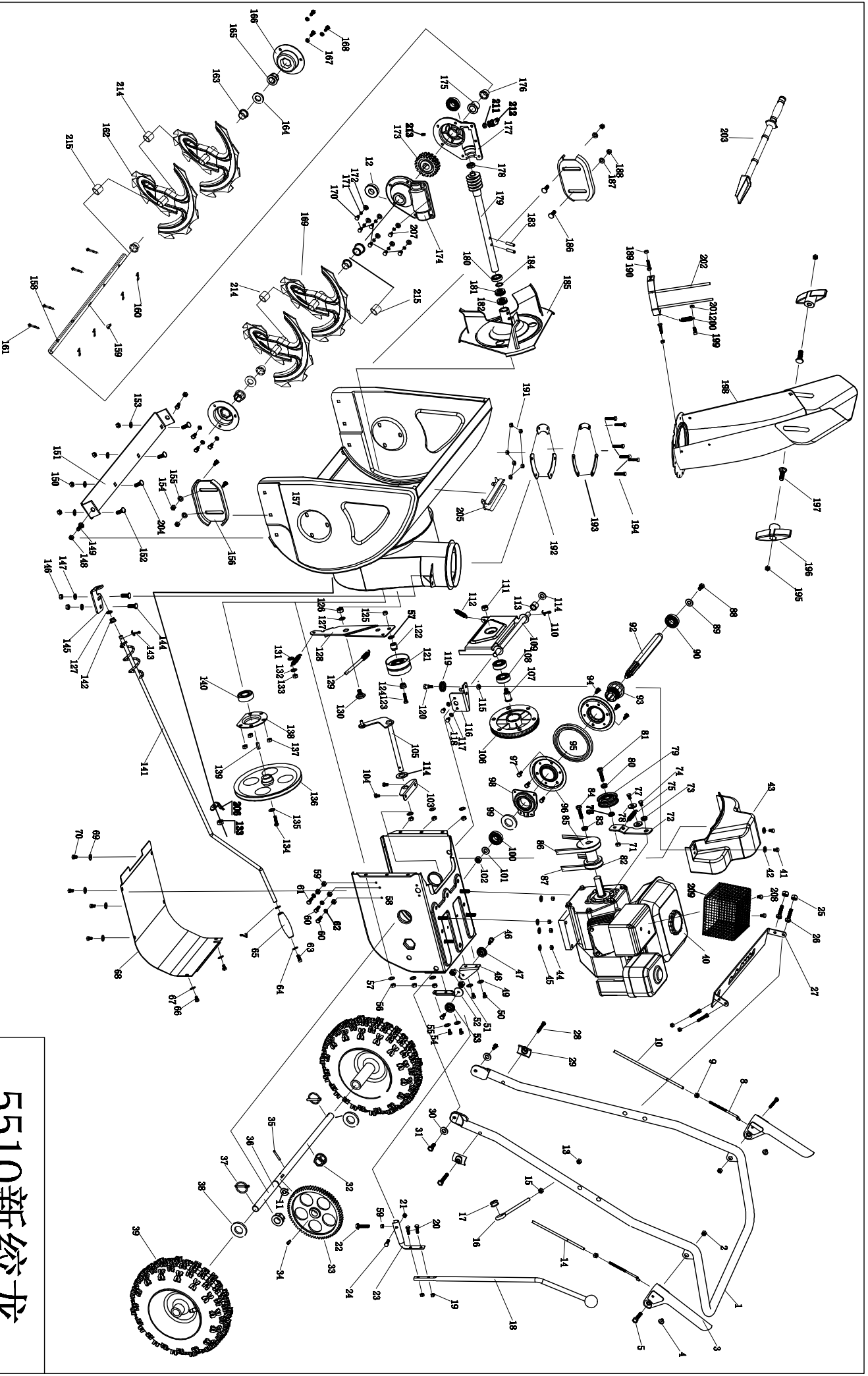


551Q新绞龙



ZLST551Q零配件明细表 Spare part list

| 编号 | Code 代号 | 名 称 | English Name | 数量 |
|----|---------|---------|----------------------|----|
| 1 | SJ-042 | SJ扶手套件 | SJ Handrail kit | 1套 |
| 2 | SB-001 | 防松螺母 | Lock nut | 2 |
| 3 | SJ-110 | SJ手柄 | SJ Handle | 2 |
| 4 | SJ-047 | SJ橡胶帽 | SJ Rubber Cap | 2 |
| 5 | SB-002 | 外六角螺丝 | Hexagonal Screw | 2 |
| 7 | SB-118 | 平垫 | Plain cushion | 1 |
| 8 | SJ-032B | SJ铁杆 | SJ Iron Stick | 2 |
| 9 | SB-004 | 铜螺母 | Nut | 2 |
| 10 | SJ-032 | SJ铁丝杆1 | SJ Iron Stick 1 | 1套 |
| 11 | SB-123 | 卡簧 | Retailing Circlip | 1 |
| 12 | SB-165 | 油封 | Oil Seal | 2 |
| 13 | SB-006 | 防松螺母 | Lock nut | 1 |
| 14 | SJ-033 | SJ铁丝杆2 | SJ Iron Stick 2 | 1套 |
| 15 | SB-007 | 六角螺母 | Hexagonal Nut | 1 |
| 16 | SJ-044B | SJ转杆 | SJ Crank | 1 |
| 17 | SJ-044C | SJ转杆橡胶圈 | SJ Rubber Circle | 1 |
| 18 | SJ-068A | SJ操纵杆 | SJ joystick | 1 |
| 19 | SB-008 | 法兰螺母 | Flange nut | 2 |
| 20 | SB-009 | 内六角螺丝 | Hexagonal Screw | 2 |
| 21 | SB-010 | 法兰螺母 | Flange nut | 1 |
| 22 | SB-011 | 外六角螺丝 | Hexagonal Screw | 1 |
| 23 | SJ-068B | SJ操纵杆钢片 | SJ joystick plate | 1 |
| 24 | SB-012 | 外六角螺丝 | Hexagonal Screw | 1 |
| 25 | SB-013 | 防松螺母 | Lock nut | 4 |
| 26 | SB-014 | 外六角螺丝 | Hexagonal Screw | 4 |
| 27 | SJ-109 | SJ限位框 | SJ Limit frame | 1 |
| 28 | SB-015 | 外六角螺丝 | Hexagonal Screw | 2 |
| 29 | SJ-028 | SJ扶手杆垫片 | SJ Handle Washer | 2 |
| 30 | SB-016 | 平垫 | Plain cushion | 2 |
| 31 | SB-017 | 外六角螺丝 | Hexagonal Screw | 2 |
| 32 | SJ-026 | SJ端盖轴套 | SJ head shaft sleeve | 2 |
| 33 | SJ-003 | SJ大齿轮 | SJ Gear | 1 |
| 34 | SB-018 | 半圆键 | Semicircular key | 2 |
| 35 | SB-019 | 销子 | Pin | 1 |
| 36 | SJ-017 | SJ驱动轮轴 | SJ Drive Bearing | 1 |
| 37 | SJ-066 | SJ弹簧销 | SJ Spring Pin | 2 |
| 38 | SB-020 | 平垫 | Plain cushion | 3 |
| 39 | SB-021 | 轮胎 | Tyre | 2 |
| 40 | SJ-134 | 汽油机 | Gasoline Engine | 1 |
| 41 | SB-022 | 外六角螺丝 | Hexagonal Screw | 2 |
| 42 | SB-023 | 平垫 | Plain cushion | 2 |

| | | | | |
|----|------------|-----------|------------------------------|----|
| 43 | SJ-031 | SJ皮带轮罩壳 | SJ Pulley Cover | 1 |
| 44 | SB-024 | 防松螺母 | Lock nut | 4 |
| 45 | SB-025 | 平垫 | Plain cushion | 4 |
| 46 | SJ-052 | 外六角螺丝 | Hexagonal Screw | 2 |
| 47 | SJ-016B | SJ拉线滑轮 | SJ wire pulley | 1 |
| 48 | SJ-016A | SJ滑轮安装板1 | SJ pulley sub panel 1 | 1 |
| 49 | SB-026 | 平垫 | Plain cushion | 2 |
| 50 | SB-027 | 外六角螺丝 | Hexagonal Screw | 2 |
| 51 | SB-028 | 防松螺母 | Lock nut | 2 |
| 52 | SJ-014 | SJ滑轮安装板3 | SJ pulley sub panel 3 | 1 |
| 53 | SJ-016B | SJ拉线滑轮 | SJ wire pulley | 1 |
| 54 | SB-029 | 外六角螺丝 | Hexagonal Screw | 2 |
| 55 | SB-030 | 平垫 | Plain cushion | 2 |
| 56 | SB-031 | 防松螺母 | Lock nut | 6 |
| 57 | SB-032 | 平垫 | Plain cushion | 6 |
| 58 | SJ-103 | SJ传动箱罩壳 | SJ Gearbox Cover | 1 |
| 59 | SB-033 | 外六角螺丝 | Hexagonal Screw | 4 |
| 60 | SB-034 | 外六角螺丝 | Hexagonal Screw | 1 |
| 61 | SB-035 | 外六角螺丝 | Hexagonal Screw | 1 |
| 62 | SB-036 | 防松螺母 | Lock nut | 3 |
| 63 | SB-037 | 十字槽半圆头螺丝 | Hexagonal Screw | 1 |
| 64 | SB-038 | 平垫 | Plain cushion | 1 |
| 65 | SJ-018 | SJ手摇套 | SJ Handle Sleeve | 1 |
| 66 | SB-039 | 外六角螺丝 | Hexagonal Screw | 2 |
| 67 | SB-040 | 平垫 | Plain cushion | 1 |
| 68 | SJ-102 | SJ传动箱罩板 | SJ Gearbox Cover | 1 |
| 69 | SB-041 | 平垫 | Plain cushion | 4 |
| 70 | SB-042 | 外六角螺丝 | Hexagonal Screw | 4 |
| 71 | SB-043 | 防松螺母 | Lock nut | 1 |
| 72 | SJ-045 | SJ小张紧板 | SJ Tension Plate | 1 |
| 73 | SJ-046-1 | 小张紧板凸垫 | Tension convex washer | 1 |
| 74 | SB-044 | 外六角螺丝 | Hexagonal Screw | 1 |
| 75 | SJ-035-1 | SJ弹簧3 | SJ Spring 3 | 1 |
| 76 | SX-11-170B | 小张紧轮凸垫 | SJ Washer 2 | 1 |
| 77 | SB-045 | 外六角螺丝 | Hexagonal Screw | 1 |
| 78 | SB-046 | 平垫 | Plain cushion | 2 |
| 79 | SX-11-170 | 小张紧轮(加轴承) | SJ Tension pulley (+Bearing) | 1套 |
| 80 | SJ-008C | 垫衬 | SJ Pallet | 1 |
| 81 | SB-047 | 外六角螺丝 | Hexagonal Screw | 1 |
| 82 | SJ-049 | SJ主同步轮 | Man Synchronization Wheel | 1 |
| 83 | SB-048 | 平垫 | Plain cushion | 1 |
| 84 | SB-049 | 外六角法兰螺丝 | Hexagonal Screw | 1 |
| 85 | SJ-049B | SJ主皮带轮 | SJ Main pulley | 1 |
| 86 | SB-050 | 三角皮带 | V-belt | 1 |
| 87 | SB-051 | 同步带 | Synchronization Belt | 1 |

| | | | | |
|-----|---------|--------------|------------------------------------|---|
| 88 | SB-052 | 六角螺丝 | Hexagonal Screw | 1 |
| 89 | SB-053 | 平垫 | Plain cushion | 3 |
| 90 | SB-054 | 带止动槽深沟球轴承 | Deep groove bearing with snap ring | 1 |
| 92 | SJ-005 | SJ六角变速轴 | SJ Hexagon Gear-shaft | 1 |
| 93 | SJ-013C | SJ变速轮 | SJ Change pulley | |
| 94 | SB-055 | 外六角螺丝 | Hexagonal Screw | |
| 95 | SJ-013D | SJ变速轮橡胶圈 | SJ change wheel rubber ring | |
| 96 | SJ-013A | SJ变速轮大垫圈 | SJ Change pulley washer | |
| 97 | SB-056 | 外六角螺丝 | Hexagonal Screw | |
| 98 | SJ-013B | SJ变速轮轴盖 | SJ Change pulley cover | |
| 99 | SB-057 | 轴用卡簧 | Snap Spring | |
| 100 | SB-058 | 深沟球轴承 | Deep slot bearing | |
| 101 | SB-059 | 平垫 | Plain cushion | |
| 102 | SB-060 | 螺母 | nut | |
| 103 | SJ-002 | SJ直角铁块 | SJ Orthogonal Iron | |
| 104 | SB-061 | 外六角螺丝 | Hexagonal Screw | |
| 105 | SJ-040 | SJ拨叉 | SJ Gear lever | |
| 106 | SJ-010A | SJ传动同步轮 | Drive Synchronization Wheel | |
| 107 | SJ-010B | SJ传动皮带轮轴 | SJ Driving belt axle | |
| 108 | SB-062 | 深沟球轴承 | Deep slot bearing | |
| 109 | SJ-007 | SJ皮带轮支架 | SJ Pulley bracket | |
| 110 | SB-063 | 销子 | Pin | |
| 111 | SB-064 | 防松螺母 | Lock nut | |
| 112 | SJ-069 | 弹簧6 | Spring 6 | |
| 113 | SJ-107 | SJ隔套 | SJ Separate Sleeve | |
| 114 | SB-065 | 平垫 | Plain cushion | |
| 115 | SB-066 | 法兰螺母 | Lock nut | |
| 116 | SJ-015 | SJ滑轮安装板2 | SJ Pulley sub panel 2 | |
| 117 | SB-067 | 平垫 | Plain cushion | |
| 118 | SB-068 | 外六角螺丝 | Hexagonal Screw | |
| 119 | SJ-016B | SJ拉线滑轮 | SJ wire pulley | |
| 120 | SJ-052 | 外六角螺丝 | Hexagonal Screw | |
| 121 | SJ-008 | SJ大张紧轮2(加轴承) | SJ Tension pulley 2(+Bearing) | |
| 122 | SJ-008B | SJ垫套 | SJ Washer | |
| 123 | SB-069 | 外六角螺丝 | Hexagonal Screw | |
| 124 | SJ-008C | SJ垫衬 | SJ Pallet | |
| 125 | SB-070 | 防松螺母 | Lock nut | |
| 126 | SB-071 | 防松螺母 | Lock nut | |
| 127 | SB-072 | 平垫 | Plain cushion | |
| 128 | SJ-023 | SJ固定板 | SJ Dead plate | |
| 129 | SJ-032A | SJ弹簧1 | Spring 1 | |
| 130 | SJ-050 | SJ六角螺丝1 | SJ Hexangular Screw 1 | |
| 131 | SJ-037 | 弹簧5 | Spring 5 | |
| 132 | SB-073 | 平垫 | Plain cushion | |

| | | | |
|-----|---------|----------|-----------------------------|
| 133 | SB-074 | 防松螺母 | Lock nut |
| 134 | SB-075 | 外六角螺丝 | Hexagonal Screw |
| 135 | SB-076 | 平垫 | Plain cushion |
| 136 | SJ-039 | SJ大皮带轮 | SJ Pulley |
| 137 | SB-077 | 防松螺母 | Lock nut |
| 138 | SJ-004 | SJ圆底盖 | SJ Rockered Cover |
| 139 | SB-078 | 方键 | Square Key |
| 140 | SB-079 | 带座外球面球轴承 | Bearing |
| 141 | SJ-044A | SJ摇杆 | SJ Rocker Handle |
| 142 | SJ-011A | SJ安装板塑料圈 | SJ sub panel plastic circle |
| 143 | SB-080 | 销子 | Pin |
| 144 | SB-081 | 半园头方颈螺丝 | Step bolt |
| 145 | SJ-011 | SJ小安装板 | SJ Sub panel |
| 146 | SB-082 | 防松螺母 | Lock nut |
| 147 | SB-083 | 平垫 | Plain cushion |
| 148 | SB-084 | 防松螺母 | Lock nut |
| 149 | SB-085 | 半园头方颈螺丝 | Step bolt |
| 150 | SB-086 | 防松螺母 | Lock nut |
| 151 | SJ-006 | SJ长挡板 | SJ Shave Plate |
| 152 | SB-087 | 半园头方颈螺丝 | Step bolt |
| 153 | SB-088 | 平垫 | Plain cushion |
| 154 | SB-089 | 防松螺母 | Lock nut |
| 155 | SB-090 | 平垫 | Plain cushion |
| 156 | SJ-111 | SJ滑撬 | SJ Sliding Stick |
| 157 | SJ-104 | SJ大罩壳 | SJ Steel Cover |
| 158 | SJ-022 | SJ输出轴 | SJ Output Shaft |
| 159 | SB-091 | 半圆键 | Semicircular key |
| 160 | SB-092 | 防松螺母 | Lock nut |
| 161 | SJ-070 | 非标螺丝 | Not-Standard Screw |
| 162 | SJ-067A | SJ左搅龙 | SJ Left Auger |
| 163 | SJ-019 | SJ驱动轴小套 | SJ Drive Shaft Sheath |
| 164 | SB-093 | 平垫 | Plain cushion |
| 165 | SJ-020 | SJ轴套 | SJ Shaft Sheath |
| 166 | SJ-024 | SJ轴承盖 | SJ Bearing Cover |
| 167 | SB-094 | 平垫 | Plain cushion |
| 168 | SB-095 | 外六角螺丝 | Hexagonal Screw |
| 169 | SJ-067 | SJ右搅龙 | SJ Right Auger |
| 170 | SB-096 | 六角螺丝 | Hexangular Screw |
| 171 | SB-097 | 弹簧垫圈 | Spring Washer |
| 172 | SB-098 | 平垫 | Plain cushion |
| 173 | SJ-038 | SJ蜗轮 | SJ Worm Wheel |
| 174 | SJ-101 | SJ上底座 | SJ Upper Pedestal |
| 175 | SJ-108 | SJ输出轴套 | SJ Shaft Sheath |
| 176 | SJ-019 | SJ驱动轴小套 | SJ Drive Shaft Sheath |
| 177 | SJ-101A | SJ底座 | SJ Pedestal |

| | | | | |
|-----|---------|---------|--------------------------------|---|
| 178 | SB-099 | 深沟球轴承 | Deep slot bearing | |
| 179 | SJ-030 | SJ传动蜗轮轴 | SJ Drive Worm shaft | |
| 180 | SB-100 | 深沟球轴承 | Deep slot bearing | |
| 181 | SB-101 | 单向推力球轴承 | One direction thrust bearing | |
| 182 | SB-102 | 油封 | Oil Seal | |
| 183 | SB-103 | 销子 | Pin | |
| 184 | SJ-057 | 隔圈 | Washer | |
| 185 | SJ-001 | SJ风扇 | SJ Fan | |
| 186 | SB-104 | 半园头方颈螺丝 | Step bolt | |
| 187 | SB-105 | 平垫 | Plain cushion | |
| 188 | SB-106 | 防松螺母 | Lock nut | |
| 189 | SB-107 | 防松螺母 | Lock nut | |
| 190 | SB-108 | 外六角螺丝 | Hexagonal Screw | |
| 191 | SB-109 | 防松螺母 | Lock nut | |
| 192 | SJ-021 | 出雪口压片 | Chute Bead | |
| 193 | SJ-021C | 出雪口垫片 | Chute Gasket | |
| 194 | SB-120 | 外六角螺丝 | Hexagonal Screw | |
| 195 | SB-111 | 防松螺母 | Lock nut | |
| 196 | SJ-138 | 锁紧手柄 | Locking Handle | |
| 197 | SB-112 | 半园头方颈螺丝 | Step bolt | |
| 198 | SJ-140 | 出雪口 | Discharge Chute | |
| 199 | SB-113 | 外六角螺丝 | Hexagonal Screw | |
| 200 | SJ-036 | 弹簧4 | Spring 4 | |
| 201 | SB-114 | 法兰螺母 | Lock nut | |
| 202 | SJ-012 | SJ弯杆套件 | SJ Discharge Chute Accessories | |
| 203 | SJ-150 | 塑料铲 | Plastic Shovel | |
| 204 | SB-110 | 半园头方颈螺丝 | Step bolt | |
| 205 | SJ-151 | 铲座 | Shovel base | 1 |
| 206 | SJ-113 | 纸垫 | Paper cushion | 1 |
| 207 | SB-115 | 六角螺丝 | Hexagonal Screw | 1 |
| 208 | SB-121 | 法兰螺丝 | Flange screw | 2 |
| 209 | SJ-130 | 隔热罩 | Thermally insulated shroud | 1 |
| 211 | SB-117 | 波形垫片 | Corrugated gasket | 1 |
| 212 | SB-116 | 加油嘴 | Lubricating Oil Nipple | 1 |
| 213 | SB-119 | 一字螺栓 | Bolt | 1 |
| 214 | SJ-122 | 电灯 | Lamp | 1 |
| 215 | SB-160 | 外六角螺母 | Hexagonal nut | 1 |
| 216 | SJ-123 | 灯架 | Lamp bracket | 1 |
| 217 | SB-161 | 外六角螺栓 | Hexagonal bolt | 1 |
| 218 | SB-162 | 外六角螺母 | Hexagonal nut | 1 |
| 219 | SJ-120 | 电瓶盖 | Battery cover | 1 |
| 220 | SB-163 | 外六角螺栓 | Hexagonal bolt | 1 |
| 221 | SB-164 | 外六角螺母 | Hexagonal nut | 1 |
| 222 | SJ-121 | 电瓶 | Battery | 1 |
| 223 | | 塑料隔套 | Plastic sleeve | |

| | | | | |
|-----|--|------|----------------|--|
| 224 | | 塑料隔套 | Plastic sleeve | |
|-----|--|------|----------------|--|